



**PRODUCT**

**CATALOG**

**2024**

High Sensitivity,  
High Quality!



# COMPANY PROFILE

## ABOUT US

TMS Savunma Sanayi Limited Company was established in Konya Beyşehir in 2020 and stepped into the machining sector, doubled its production capacity in two years and took its place in the Cerakote paint sector. Our company has offered effective solutions in the field of machining with its machine park and expert technical staff and has shown its mastery in Cerakote paint. With Sliding Automat machines and Cerakote painting team, we serve many sectors, especially defense industry, automotive, medical, spare parts, sectors. With the machines we have, our productions have advantages such as precision, high production speed and flexibility.

As TMS Savunma Sanayi, we use the highest quality production products and ensure that you benefit from all the advantages of Machining and Cerakotene at the highest level. You can contact us for Machining and Cerakote paint service where professional workmanship is integrated with quality results.



**TIMELY  
DELIVERY**



**SMART  
ENGINEERING**



**HIGH  
QUALITY**



**TECHNICAL  
SUPPORT**

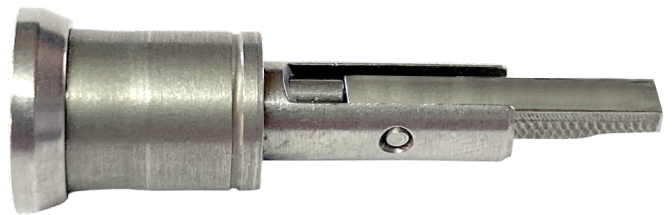
## OUR MISSION

Our primary mission is to create a loyal customer base that is satisfied beyond expectations with our expert employees, who deliver products and orders in accordance with customer needs and demands at the highest quality standards at international quality, on time. In line with this, it is also our mission principle to have innovative, creative, progressive, sharing, analytical, rational, scientific, sincere and leveled approaches in all our applications.

## OUR VISION

Our vision is aim achive to develop systematically and sustainably on the solid foundation of our corporate structure. We can provide our customers with services above their expectations thanks to our technology and experience. And to achieve universality in all the services we provide and to make our company an internationally leading company.





**\*\* You can order in any size and dimensions you want.**

\*\* İstedığınız boyut ve ölçülerde sipariş verebilirsiniz.

# FIRIN PIN / ATEŞLEME PİMİ



**FP-001**



**FP-002**



**FP-003**



**FP-004**



**FP-005**



**FP-006**



**FP-007**



**FP-008**



**FP-009**

\*\* You can order in any size and dimensions you want.

\*\* İstedığınız boyut ve ölçülerde sipariş verebilirsiniz.





**FP-010**



**FP-011**



**FP-012**



**FP-013**



**FP-014**



**FP-015**



**FP-016**



**FP-017**



**FP-018**

\*\* You can order in any size and dimensions you want.  
\*\* İstedığınız boyut ve ölçülerde sipariş verebilirsiniz.

# COCKING HANDLE / KURMA KOLU



CH-001



CH-002



CH-003



CH-004



CH-005



CH-006



CH-007



CH-008



CH-009

\*\* You can order in any size and dimensions you want.

\*\* İstedığınız boyut ve ölçülerde sipariş verebilirsiniz.

# COCKING HANDLE / KURMA KOLU



**FP-010**



**FP-011**



**FP-012**



**FP-013**



**FP-014**



**FP-015**



**FP-016**



**FP-017**



**FP-018**

\*\* You can order in any size and dimensions you want.

\*\* İstedığınız boyut ve ölçülerde sipariş verebilirsiniz.



SC-001



SC-002



SC-003



SC-004



SC-005



SC-006



SC-007



SC-008



SC-009



SC-010



SC-011



SC-012



SC-013



SC-014



SC-015



SC-016

\*\* You can order in any size and dimensions you want.  
\*\* İstedığınız boyut ve ölçülerde sipariş verebilirsiniz.





SC-017



SC-018



SC-019



SC-020



SC-021



SC-022



SC-023



SC-024



SC-025



SC-026



SC-027



SC-028



SC-029



SC-030



SC-031



SC-032

\*\* You can order in any size and dimensions you want.  
\*\* İstedığınız boyut ve ölçülerde sipariş verebilirsiniz.



SC-033



SC-034



SC-035



SC-036



SC-037



SC-038



SC-039



SC-040



SC-041

\*\* You can order in any size and dimensions you want.  
\*\* İstedığınız boyut ve ölçülerde sipariş verebilirsiniz.



PN-001



PN-002



PN-003



PN-004



PN-005



PN-006



PN-007



PN-008



PN-009



PN-010



PN-011



PN-012



PN-013



PN-014



PN-015



PN-016

\*\* You can order in any size and dimensions you want.  
\*\* İstedığınız boyut ve ölçülerde sipariş verebilirsiniz.





PN-017



PN-018



PN-019



PN-020



PN-021



PN-022



PN-023



PN-024



PN-025



PN-026



PN-027



PN-028



PN-029



PN-030



PN-031



PN-032

\*\* You can order in any size and dimensions you want.  
\*\* İstedığınız boyut ve ölçülerde sipariş verebilirsiniz.





AU-001



AU-002



AU-003



AU-004



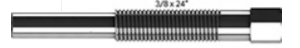
AU-005



AU-006



AU-007



AU-008



AU-009



AU-010



AU-011



AU-012



AU-013



AU-014



AU-015



AU-016

\*\* You can order in any size and dimensions you want.  
\*\* İstedığınız boyut ve ölçülerde sipariş verebilirsiniz.



AU-017



AU-018



AU-019



AU-020



AU-021



AU-022



AU-023



AU-024



AU-025



AU-026

\*\* You can order in any size and dimensions you want.  
\*\* İstedığınız boyut ve ölçülerde sipariş verebilirsiniz.





MD-001



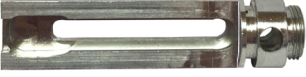
MD-002



MD-003



MD-004



MD-005



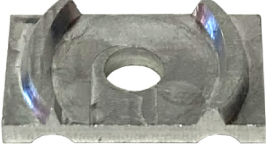
MD-006



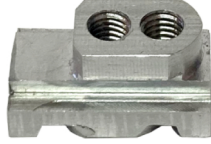
MD-007



MD-008



MD-009



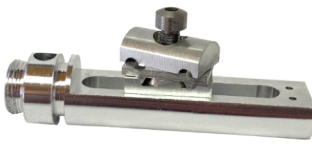
MD-010



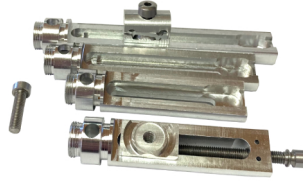
MD-011



MD-012



MD-013



MD-014

\*\* You can order in any size and dimensions you want.  
\*\* İstedığınız boyut ve ölçülerde sipariş verebilirsiniz.



[www.tmssavunma.com](http://www.tmssavunma.com)



[export@tmssavunma.com](mailto:export@tmssavunma.com)



Üzümlü Mah. 44712 Sk. No:9B  
Beyşehir/KONYA



+90 530 344 36 33